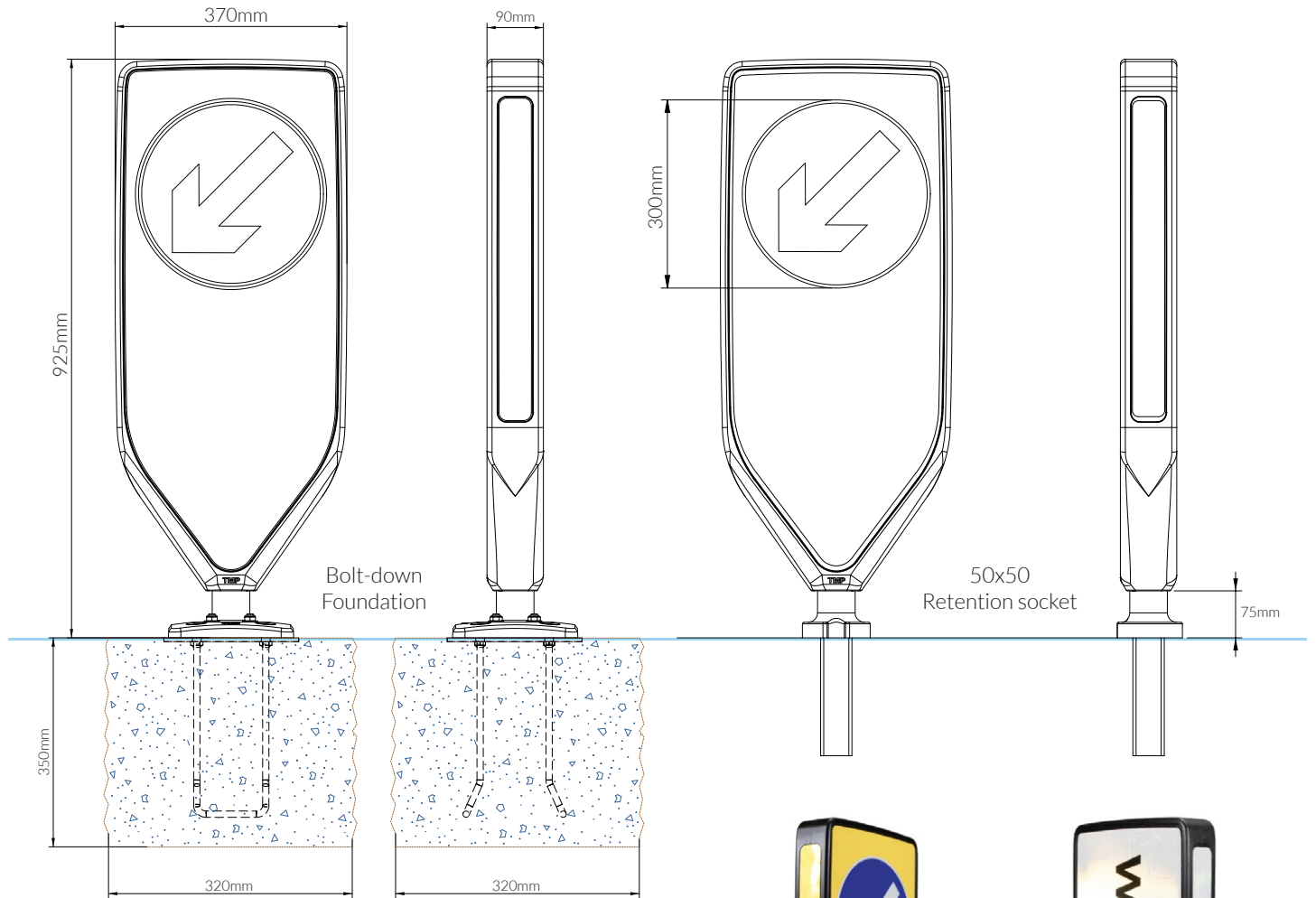


Specifications



Material	Rotationally moulded polyethylene
Colour	Black / White
Protection	Recessed reflective panels & anti-vandal fixings
Corrosive Resistance	SP1/SP2
Installation Options	Foundation cage, retention socket or base light conversion
Reflective Material	3M Diamond Grade DG3 Series 4000 Fully compliant with Class R3B, EN12899-1:2007
Sign Face	300mm (single or double sided)
Front Reflector	332mm wide x 756mm high (Area: 228,024mm ²)
Rear Reflector (optional)	332mm wide x 756mm high (Area: 228,024mm ²)
Side Reflector	51.2mm wide x 504mm high (Area: 25,872mm ²)
BS8442:2015	Fully compliant
BS EN 12767:2007	100:NE:4
BS EN 12767:2019	100-NE-A-R-NS-MD-0 70-NE-A-R-NS-MD-0 50-NE-A-R-NS-MD-0
Warranty	12yr Delamination warranty backed by 3M 3yr Manufacturer's warranty
Recyclable	Yes



Great for Commercial or Highway Use

Made from rotationally moulded polyethylene, the non-illuminated sign face of the Evo-N bollard can be overlaid with any regulatory traffic sign for on highway, or any commercial design for car parks and business sites. And like the rest of our traffic bollards the Evo-N can be single or double-sided.

Versatile Installation



Zero Maintenance

The Evo-N needs no additional maintenance. As with all devices installed on the highway, external surfaces should be periodically cleaned with diluted mild detergent.

