

THANK YOU FOR YOUR PURCHASE
PLEASE READ THESE INSTRUCTIONS CAREFULLY PRIOR TO INSTALLATION / MAINTENANCE

<p>SPECIFICATIONS</p> <p>Wattage: 1.2W Lamp: In-built Epistar LED Chips 10 *18 mil (120° Beam Angle) Colour Temperature: 3000K (Warm White) / 6000K (Daylight White) Lumen Output: 150 lm LED Life Expectancy: up to 50,000 hours Sensor: Light / Charge Sensor IP Rating: IP65 Battery Type: Lithium - LiFePO4 3.2v/6000mAh (replaceable) Battery Charge Time: 6-8 hrs full sun (approx.) AM 1.5 1000W / m² 25°C Max Illumination Time at Full Charge: Up to 23hrs Solar Panel: 9v / 3W Monocrystalline Solar Panel – Grade A Materials: 6063 Die Cast Aluminium & Tempered Glass Weight: 3.8KG (approx.) Mounting: Internal Surface Mount (supplied) Lighting Function: 1hr 100% + 2hrs 80% + 2hrs 50% + 9hrs 30% Working Temperature: -25°C ~ 55°C Included: Bollard, Internal Mount, Rubber Bung UK REGISTERED DESIGN: 6089623</p>		 <p>98mm inner</p> <p>✓✓✓✓ 5 YEAR GUARANTEE</p>
---	--	--

⚠ WARNINGS ⚠

- If a fitting is found to be damaged, cease use immediately.
- The unit may get warm whilst on for a period of time.
- Always take care when installing your solar light.
- Fitting must be mounted to a solid surface or using relevant anchor bolts / J-Bolts
- This Solar Light will not charge correctly if the panel is behind glass or artificial light is used.
- Ensure the waterproof bung is in place at all times, other than when turning the unit on.
- Due to temperature difference in and outside the fitting, condensation may be present internally but will not affect use.

CLEANING & MAINTENANCE:

Occasional cleaning and care are recommended for this product. Wipe with a soft, slightly damp cloth to remove any surface dirt. To maintain efficiency, specifically clean the solar panel and glass lens on a regular basis. Also, keep the solar panel free of debris and snow to prevent reduced battery life or malfunction. Do not use abrasive cleaners or a lot of water as this could damage the fitting. Please refer to our website for more information on the best way to clean different materials.

ECCENTRICA TECHNOLOGY:

The Eccentrica is a highly efficient solar light with high capacity LiFePO₄ Lithium batteries and a fast charging Monocrystalline solar panel. This means that even on partially cloudy and rainy days, it will re-charge efficiently. The high battery capacity gives enough power for up to 23 hrs solid light (approx. 2-3 nights) even when there is little light during the day. The lumen output is bright enough to illuminate driveways and paths, making them safe to navigate at night.

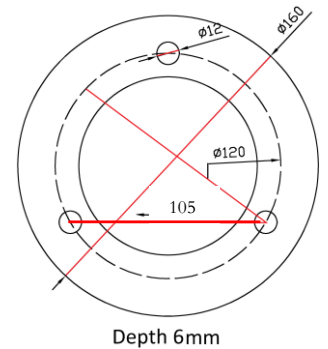
INSTALLATION:

The Eccentrica is designed to be mounted on a patio, decking or set in concrete (J-Bolts – sold separately) via the internal surface mount.

Recommended spacing is 3m apart for substantial path lighting. Closer spacing / staggering will result in a more intense light.

Location – It is important that the installation location is carefully considered, avoiding shady areas. Ensure there is no other lights which could interfere with the light, imitating daylight and forcing the light off.

1. To surface mount, remove the internal base from the bollard by unscrewing the 3 x cross head screws at the bottom of the bollard tube, then lift off.
2. Use the base to mark the mounting holes on the mounting surface.
3. Remove the mounting plate and drill out the 3 holes marked at the relevant depth and diameter for the mounting screws / wall plugs being used (varies based on mounting surface) – Anchor bolts recommended.
4. Secure the mounting base in place – large washers may be required.
5. Replace the bollard body, lining up the 3 x holes at the base.
6. Replace the 3 cross head screws removed in point one to secure in place.



For root mounting, use J-Bolts, set in concrete instead of anchor bolts (sold separately).

SETTINGS:

The Eccentrica has a pre-set time-controlled setting which cannot be changed. At dusk, the bollard will illuminate at full brightness, and then follow a gradual dimming sequence until it reaches 30% brightness after 5 hours. From then on it will remain at 30% until dawn. This sequence is to ensure maximum charge is retained.

IMPORTANT – SOLAR BOLLARD MUST BE TURNED ON AT ALL TIMES AFTER INSTALLATION

If the bollard is left in the off position, you may be prompted to turn the fitting on by strobing. Solar bollard will only charge when in the ON position.

Turning on the bollard

- 1) Remove the waterproof rubber bung located at the back of the post just below the head join, to locate the red on/off button.
- 2) Using a small, flathead screwdriver (or similar), push the on button inwards until it clicks and allow to pop back out (this will be partial). The bollard is now in the ON position.
- 3) Replace the waterproof, rubber bung.

NOTE: There will be a 2-5 second delay between turning the solar light on, and the bollard illuminating. In daylight, the light will turn back off within a few seconds, in darkness it will remain on and follow the time-controlled cycle. To test in daylight, cover the solar panel to imitate darkness.

STORAGE:

When storing the bollard, be sure to turn the bollard to the off position by following the above steps (check by covering and uncovering the solar panel). Once pressed, the on/off button will release fully forward. Maximum 6 months storage when fully charged – recharge will be required periodically to prevent damage to battery over long periods of time.