

Installation guidelines

litter bins

Classic



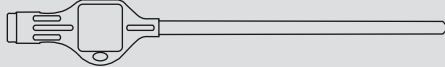
Cleaning Products should be flushed with clean water and then washed with a mild detergent solution using a bristle brush or sponge. Care should be taken not to apply undue pressure that may damage labels. Flush clean with water after washing.



Quality Standards All Leaffield Environmental products are certificated to BS EN ISO



Tools Chalk, hammer drill, 12mm masonry drill bit, mallet, 17mm socket, Key:



PPE Always wear appropriate PPE equipment and follow safety guidelines.

Preparation



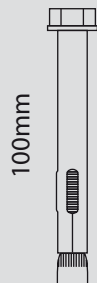
Position the ballasting base so that the locking pin faces the direction that the lock on the bin will face

Using chalk, mark the position through the three holes onto the ground below

Remove ballast cartridge and clearly mark the ground in the three hole positions with a cross

Ground fixing kit and ballasting additional components: Available as optional extra. Gravel for ballasting should be supplied by the contractor

Ground fixing bolt



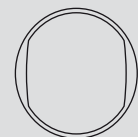
X3

Washer



X3

Ballast bung



X1

(fitted to ballast cartridge)

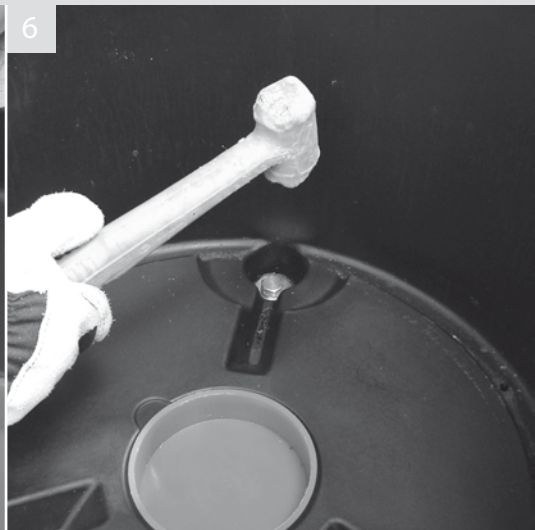
Drilling holes and inserting bolts



4 Drill 12mm holes in the three marked positions to a depth of 100mm to accommodate the bolt length, remove debris from holes



5 Re-position the base over the drilled holes. Add washers to bolts and push through moulded holes in base locating into drilled ground holes

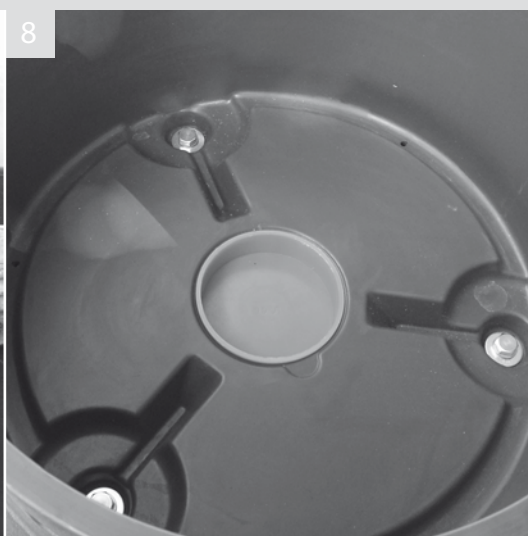


6 Using a mallet drive the bolts home

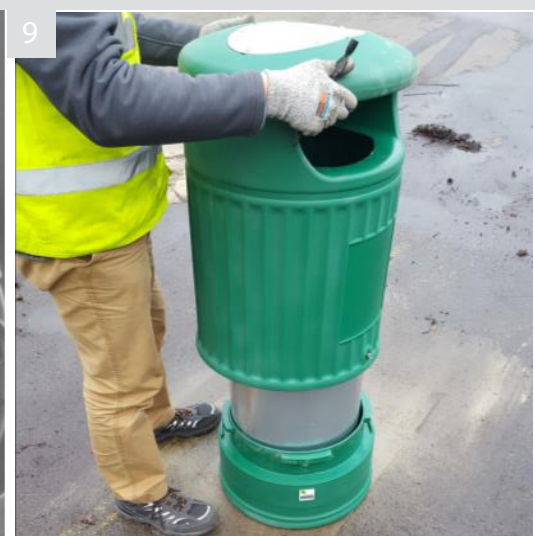
Tightening bolts



7 Use a spanner or socket to tighten the bolts



8 Tighten the bolts to 22.0Nm torque for concrete. Tightening the bolts will fan out the bolt sheath in the hole holding the bolt secure



9 Replace liner and hood. With hood resting on base rotate hood clockwise until it will rotate no further. Push lock in to engage

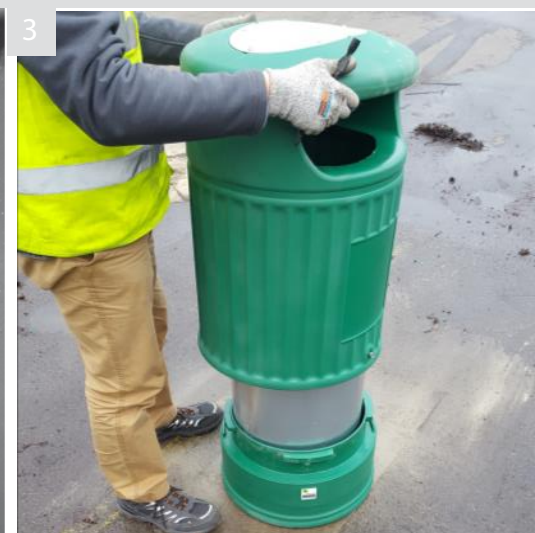
Filling integral ballast



1 Remove cap from integral ballasting base and pour gravel into the center



2 Disperse the gravel equally across the bottom of the base fill until gravel is level with the top of the raised level indicator



3 Replace liner and hood. With hood resting on base rotate hood clockwise until it will rotate no further. Push lock in to engage



telephone
+ 44 (0)1904786861



facsimile
+ 44 (0)1904786861



https://
www.speedystreetsolutions.com
/classic-round-litter-bin.html