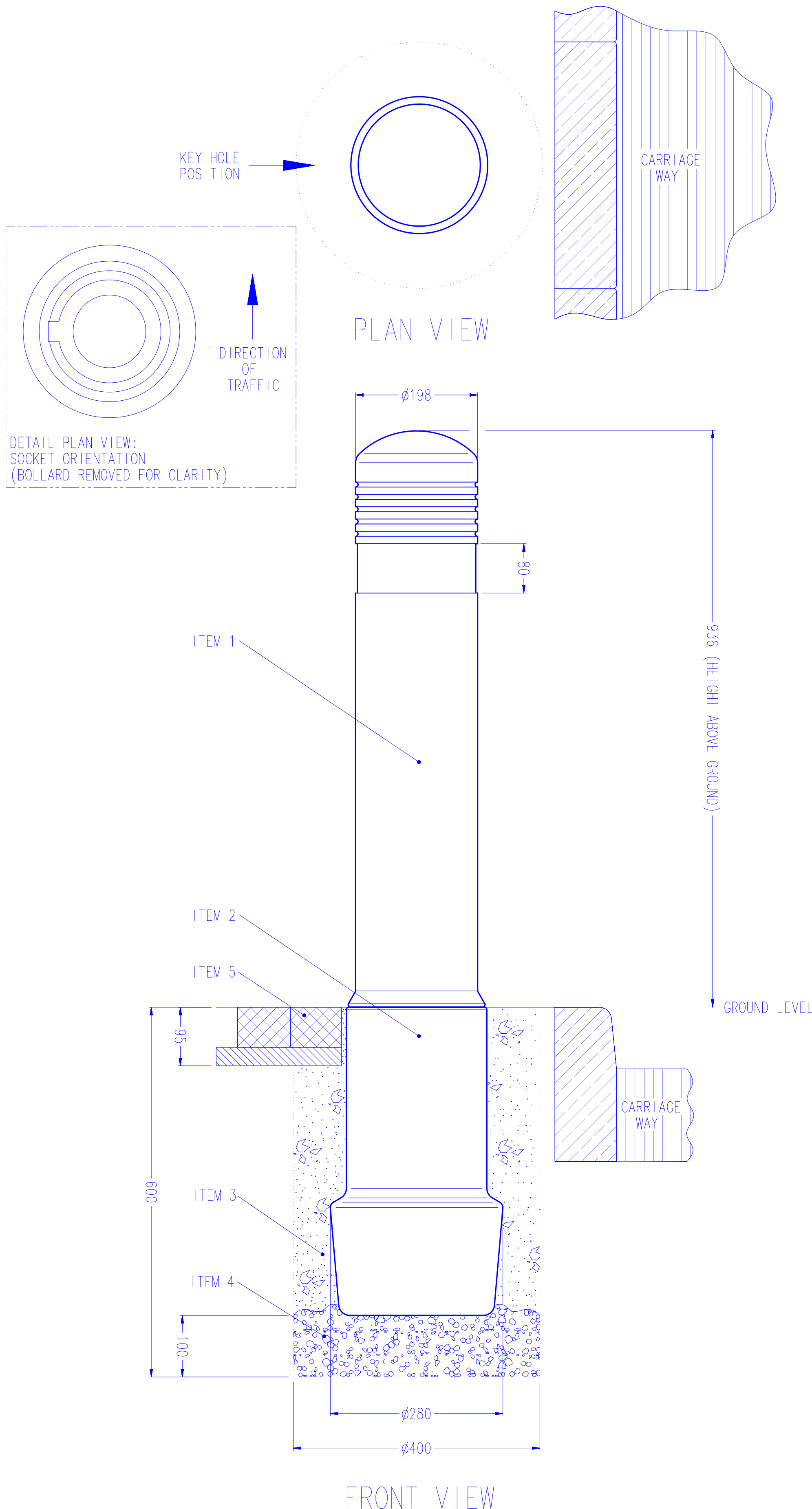


MODEL SPECIFICATION ADMIRAL BOLLARD - SOCKETED



PRODUCT INFORMATION:

- WEIGHT - BOLLARD 5.1 Kg
SOCKET 3.8 Kg
TOTAL 8.9 Kg
- MATERIAL - DURAPOL®
- COLOURS - MILLSTONE, SANDSTONE, WHITE, BLACK, GREY AND STONE.
- DIMENSIONS - ALL DIMENSIONS IN MM UNLESS OTHERWISE STATED.

INSTALLATION GUIDE:

- ITEM 1 - REMOVABLE BOLLARD COMPLETE WITH LOCKING MECHANISM
- ITEM 2 - PERMANENT GROUND SOCKET
- ITEM 3 - QUICK SETTING CONCRETE (eg. GRADE QC10)
- ITEM 4 - GRAVEL
- ITEM 5 - BLOCK PAVING
- FOR SAFETY SITE KEY HOLE ON OPPOSITE SIDE TO TRAFFIC (SEE DETAIL PLAN VIEW FOR CORRECT SOCKET ORIENTATION).
- ENSURE REFLECTIVE BANDING IS IN THE CORRECT ORIENTATION - RED TOWARDS ONCOMING TRAFFIC (YELLOW ON CENTRAL RESERVATION).
- RECOMMENDED HOLE SIZE $\phi 400\text{mm}$ x 600mm DEEP.
- WE RECOMMEND THE SOCKET IS BEDDED ON GRAVEL FOR DRAINAGE.
- COVER SOCKET TO AVOID BUILD UP OF CONCRETE/GRAVEL IN SOCKET, WHICH WILL PREVENT BOLLARD FROM SEATING AND LOCKING.
- AVOID CONTACT WITH HOT TARMACADAM AS THIS WILL SERIOUSLY IMPAIR THE PERFORMANCE OF THE BOLLARD.
- WE RECOMMEND INSTALLING WITH QUICK SETTING CONCRETE (eg. GRADE QC10) BUT EXACT INSTALLATION REQUIREMENTS SHOULD BE ASSESSED FROM A SITE SURVEY.

OPTIONAL PARTS:

- PEDESTRIAN SAFETY. A LOCKING BLANKING CAP IS AVAILABLE TO COVER THE SOCKET WHEN THE BOLLARD IS REMOVED.
- ADDITIONAL SECURITY. A KEY HOLE PLUG MAY BE FITTED TO THE BOLLARD TO HELP PREVENT UNAUTHORISED REMOVAL OF THE BOLLARD.
- ALUMINIUM BACKED RETROREFLECTIVE BANDING (TO BS EN 12899-1:2007, FIXED, VERTICAL ROAD TRAFFIC SIGNS) OR DECORATIVE BANDING MAY BE FITTED.
- STANDARD BANDING SETS:
1 x 80mm BAND.
- STANDARD OR SPIKED CHAIN LINKAGE IS AVAILABLE. RECOMMENDED PITCH BETWEEN BOLLARDS 1.1m.
- SPARE BOLLARDS, SOCKETS, KEYS AND BANDING ARE AVAILABLE.
- ALL RETOREFLECTIVE MATERIALS SUPPLIED BY GLASDON ARE AS RECOMMENDED IN TABLE NA1 OF THE NATIONAL ANNEX OF BS EN 12899-1 2007 FIXED VERTICAL ROAD SIGNS.